

BRAVE

DESIGNS LTD

2023





Welcome to Brave Designs 2023 catalogue. We still offer the widest selection of Authentic Native American jewellery together with Southwestern manufactured styles. Brave operates a Fair Trade policy and all prices are either set by the manufacturer or individual designer. To make it easier to distinguish between the authentic, handmade and the manufactured, Southwestern styles we have divided the catalogue to show Southwestern first and authentic at the end.

Our stock necklaces are still all 18”.



When my husband died, I wanted to put some meaning into the collection and the white feather is dedicated to him. A white feather is a sign from the angels and is to be treasured. It is fitting for both collections and as such we have developed the Naturally Brave point of sale and gift boxing to enhance your sales. Small Naturally Brave plinths free with orders over £500 and boxes 75p each.



TURQUOISE

Since 2017, the depletion of turquoise resource continues. The mainstay of my business is to offer the best in natural turquoise available and it is becoming increasingly difficult to find. Not to mention more expensive. Turquoise gets its colour from the heavy metals in the ground that it comes from - blue turquoise when copper is present (Mexico/Arizona) – green turquoise when iron is present (Nevada). I still like



to source American turquoise, when possible, but most of the known turquoise mines are now closed and only the Kingman mine in America is still operating. Sourcing the lovely, deep blue, Sleeping Beauty turquoise, for example, is now dependent on traders opening up old vaults and my choices are limited to what is available.



We do always try to carry an exclusive range of Boulder turquoise (turquoise veins set in the mother rock) normally sourced from the Royston mine in Nevada. Last year we added intriguing golden hills turquoise from Kazakhstan. Compitos + Sonoran gold from Mexico and Egyptian turquoise from Sinai peninsula.





CANYON CLASSICS

pages 1-12

This is the brand name that we have chosen for all our non-Indian jewellery lines that feature some of the best loved animals and symbols of Navajo lore and legend.

Within this range is our bestselling woodland and botanic range that includes beautiful iridescent dragonflies, butterflies, bees, wolves and seahorses all with their respective meanings and story cards. Ancient petroglyph carvings by the Anasazi are recreated in universal myths such as the circle of life, the man in the maze or the dreamcatcher.



HERITAGE COLLECTION

pages 13-20

This is our brand name for our offering of all our authentic Navajo or Zuni jewellery. Amongst this selection is our own, exclusive to Brave, reproductions from the golden era of Navajo silversmithing instigated and encouraged by Fred Harvey, one of the iconic developers of the Southwest, who introduced jewellery stores to his chain of hotels and restaurants along the Santa Fe railroad at the turn of the 19th century. He is considered to be one of the founding fathers of the success and popularity of the whole Southwestern Indian silver and art market.



Also in this range are the “Navajo Pearls” satinised silver beads that are a Navajo equivalent to our plain pearl necklaces. All the traditional designs, and hand made, silverwork such as Lena Platero’s pendants, the classic Zuni inlay and all designs that are still created in time-honoured tradition also fit into this collection. Where possible we provide details of the individual artisan to accompany the piece and authenticity certificates.

FETISHES

page 15

The beautiful Zuni, stone carvings that have been carved by generations of Zuni families and believed to actually contain the powers of the animal carved are exquisitely depicted with heartlines and adorned with turquoise and arrowheads. The fetishes are my particular passion, a malachite horse led me to the Southwest originally. Over recent months sales and interest have risen dramatically and led me to write a book to help you understand and promote these magical carvings. Each fetish is unique so they cannot be catalogued but we can send photographs of what we have in stock.





SC815



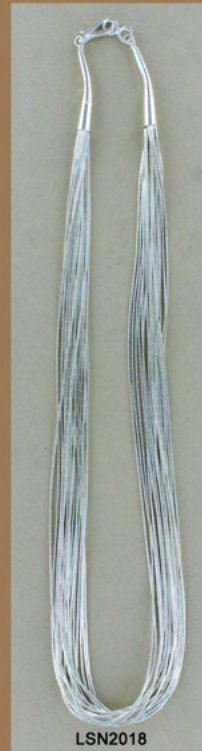
SC815L



LSN518



LSN1018



LSN2018



LSN3018



DER815T



DER815L



LSE2



LSB5P



LSN5P



SC9232



EPMC1-C



LSB20MG



LSB30MG



SB9232



EPMC1-W



LSBB



LSB3T



LSBT5



LSBL5



LSB5



LSB10

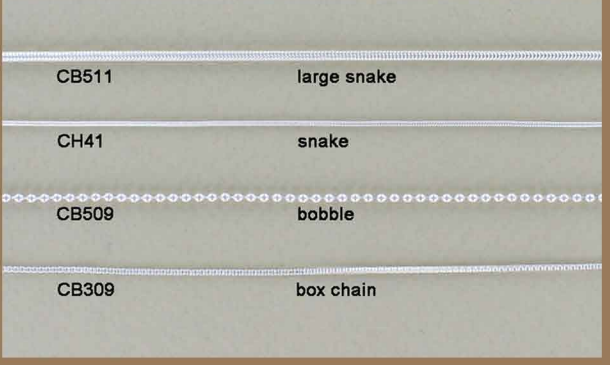


LSB20

LIQUID SILVER

Cascading strands of thin silver beads that resemble waterfalls are combined with heishi turquoise, freshwater pearl and lapis. See price list for the full range of strands and lengths available.





SILVER CHARMS & CHAINS

Welcome to our enchanted forest where all creatures from the woods and forests, oceans and wildlands abound. Complimented by leaves, flowers or fairies. All designs are sterling silver.





CHIP INLAY AND ANIMALS

Foremost in our Canyon Classic range are the animals that feature strongly in the Southwest – Eagle for vision, bear for wisdom, wolf for leadership, horse for success, dragonfly for magic and hummingbird for joy.



SOUTHWESTERN ANIMALS

Bear is given highest import in the animal kingdom as a mediator between humans and the spirit world as he can walk on two or four legs.





FEATHERS & DREAMCATCHERS

Icons of the southwest; the circle of life-discovering yourself, feather – an honour, arrow – protection, dreamcatcher – banishing bad dreams, pawprints for good omens.

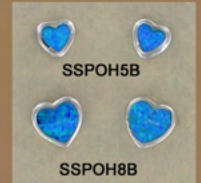
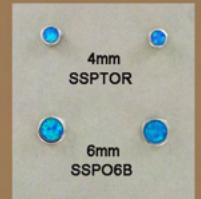




MEDICINE WHEEL, CONCH

The silver disc, normally engraved, is derived from the discs seen on horses bridles. The medicine wheel asks us to seek questions from all corners in order to find our centre.





OPALS

Made from a percentage of genuine stone mixed with synthetic opal which is laboratory grown, these designs mirror the structure and appearance of natural opal but are heat and chip resistant.



OPALS

The range is now available in white, blue, green, dark blue and new ocean blue.
Necklaces are all 18" in length.





OPALS

Made from a percentage of genuine stone mixed with synthetic opal which is laboratory grown, these designs mirror the structure and appearance of natural opal but are heat and chip resistant.





CAST TURQUOISE

Our most popular lines and the mainstay of our collection reconstituted or stabilised turquoise set in classic cast designs. The unusual webbed patterning is from crushed, chip inlay Chinese turquoise.





CAST MULTICOLOUR, LAPIS AND BAMBOO CORAL

We call the brilliantly coloured, multi-block cabochons our Aztec range and it is complimented by the same colours in our multicolour, seed bead and liquid silver.



Tommy Singer



22"

NTS22C



20"

TNSMB2



NPMC18



NB118TR



NDLMC18



48"

TNN48

Doreen Calhoun



SDN8DC

Mary Salazar



NMSTAP



TNMSCTDL



TNMSCT



TNMS12



TNMS1



TNN1



RON110

Dan Coriz



30"

SDNDC1



BMSTAP



BNMSCTDL



BNMSCT



BNMS12



BNMS1



TNB1



ROB110



TNEMSAP



TEMST



TNEMS



TNE1



SDB8DC

DESIGNER TREASURE BEAD

Designer treasure necklaces interspersed with turquoise, spiny oyster shell, lapis.



Tommy Singer



22"

NTS22



NNTFF



NNTFF2



NSFTC



NDLT20



SDNSBRC



NN1394



22"

NMSRT



NB1394



BNTFF2



NRON5R



NBARRO



TNBT1



TTNMS1



TNMSTOS



RONSQ



NNSFB



TBBT1



BTNMS1



BNMSTOS



BRONTSQ



BNSFB



ESHP



NNE171



TTNEMS



ESFT9



DER8T



NB178

NATURAL TURQUOISE NUGGETS

This is a beautiful opportunity to see the variations of natural turquoise available from different mines.





Tommy Singer



Mary Salazar



NATURAL TURQUOISE NUGGETS

Some are enhanced with other stones, spiny oyster, lapis, dumortierite, and interspersed with silver beads. Shapes vary from the smooth cut rondelle to potato nuggets or rough cut chips.



NAVAJO & ZUNI FETISHES

Whilst the table top fetishes are considered the domain of Zuni many Navajo also string beautiful fetish necklaces, pendants and earrings in natural stone.



NAVAJO & ZUNI INLAY

Whimsical Zuni designs mix with bolder Navajo hand-cut inlay and 'corn row' cobble inlay. The Spider opal is a new handcrafted opal with beautiful, unique webbed patterning.





AUTHENTIC FEATHERS & ARROWS

Lena Platero's stunning handcrafted feathers still dominate in popularity, this range of natural turquoise adorned with feathers and arrows.





AUTHENTIC NATURAL TURQUOISE

Angels and crosses became popular motifs after the Spanish conquest whilst wolves and thunderbirds have always featured in Navajo designs. Most of the designs on this page use natural Kingman turquoise which can be sourced in varying shades of blue.





BMT1-BR



BTRS2



BKTR



BRSSF1



BRSSF



BFJM2



BBBM



BOS1256



BSOTS



BOSTT



B3TS3



BORS2



BKRK2



BGT7ST



BSB5



B3TAS



B3T4



B5AS3



BRSTF



BOS3



BART



B1OTS1



BSSET



BSSET11



BPSS



BR583T



BR551T



BR577LT



BR469T



BR329T

MENS



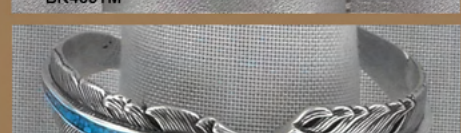
BR470T



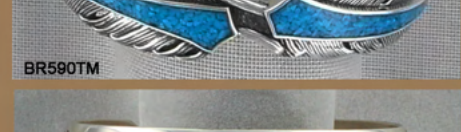
BR329SM



BR469TM



BR590TM



BPP3

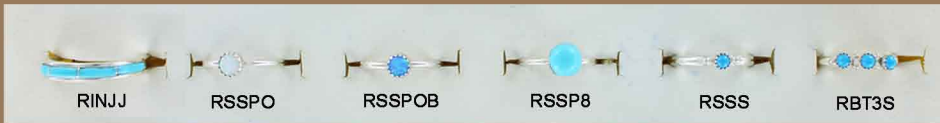
BANGLES



BASS21

BRACELETS

Our cuff bracelets are available in 7.5 inches for women and 8-9-inches for the men's. In addition to these stocklines we always have a range of one off bracelets, ask for pictures if you are interested. The full bangles are 9 inches.



RINGS, WATCHES & CRAFTS

We try to hold rings size L-S in ladies and N-V for unisex and men's rings. The watches have 3 adjustable strap sizes to fit most wrists. We stock authentic dreamcatchers from 2-10" in assorted colours, but can order sage, prayer feathers, shields, peace pipes and other crafts.



31 BLINKBONNY GARDENS, EDINBURGH, EH4 3HG
WWW.BRAVEDESIGNS.COM SALES@BRAVEDESIGNS.COM
TEL: 0131 623 0080 WWW.FACEBOOK.COM/BRAVEDESIGNS1

